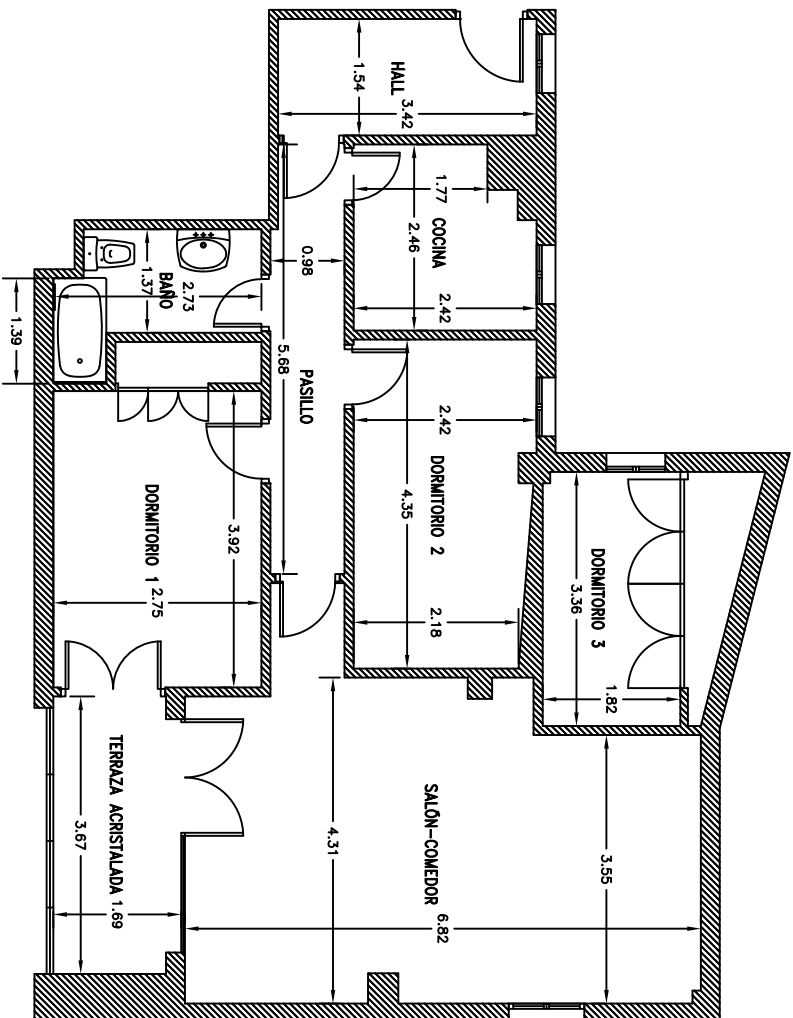


C/ EMBAJADORES  
Madrid



| SUPERFICIES ÚTILES APROXIMADAS |                      |
|--------------------------------|----------------------|
| SALÓN-COMEDOR                  | 28,39 m <sup>2</sup> |
| DORMITORIO 1                   | 10,78 m <sup>2</sup> |
| DORMITORIO 2                   | 10,10 m <sup>2</sup> |
| DORMITORIO 3                   | 5,44 m <sup>2</sup>  |
| COCINA                         | 5,46 m <sup>2</sup>  |
| BAÑO                           | 3,96 m <sup>2</sup>  |
| HALL                           | 5,27 m <sup>2</sup>  |
| PASILLO                        | 5,57 m <sup>2</sup>  |
| TERRAZA ACRISTALADA            | 6,20 m <sup>2</sup>  |
| TOTAL                          | 81,17 m <sup>2</sup> |

